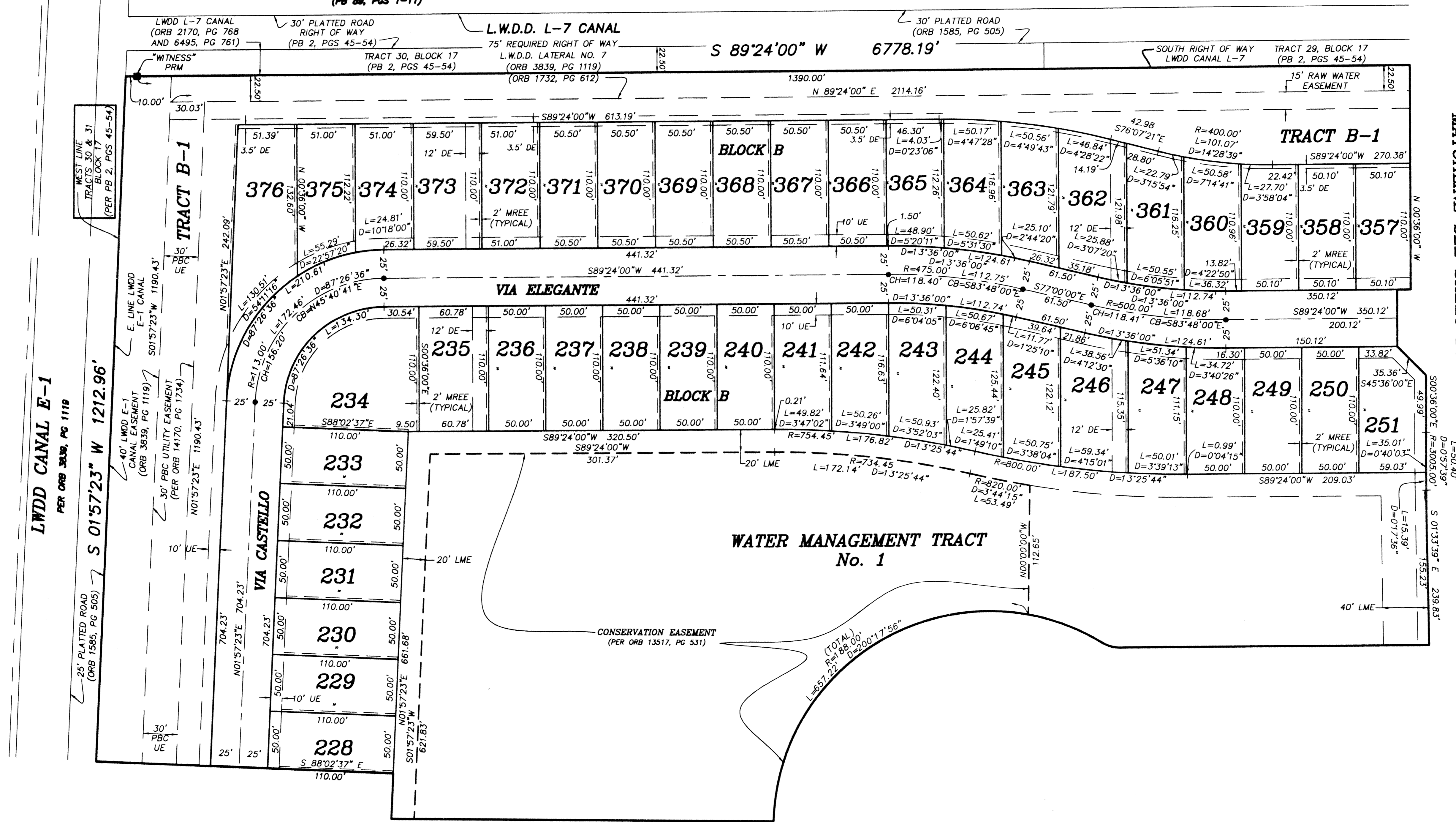


BUENA VIDA
BEING A REPLAT OF A PORTION OF BLOCKS 16 AND 17 OF PALM BEACH FARMS COMPANY
PLAT No. 3, AS RECORDED IN PLAT BOOK 2, PAGES 45 THROUGH 54 OF THE PUBLIC
RECORDS OF PALM BEACH COUNTY, FLORIDA, IN PART OF SECTIONS 7 AND 8, TOWNSHIP
44 SOUTH, RANGE 42 EAST, VILLAGE OF WELLINGTON, PALM BEACH COUNTY, FLORIDA.

SHEET 15 OF 15
MARCH 2002

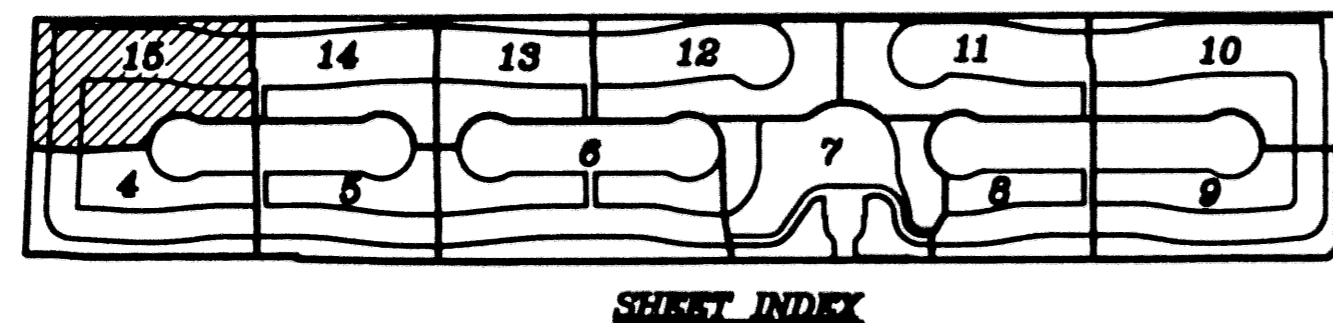
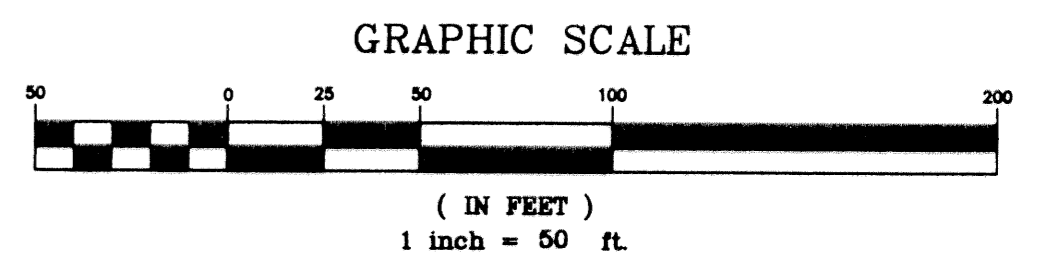
STONEHAVEN, P.U.D.
(PB 88, PGS 1-11)



MATCHLINE SEE SHEET 14 OF 15

MATCHLINE SEE SHEET 4 OF 15

- LEGEND:**
- D= DELTA (CENTRAL ANGLE)
 - L= LENGTH
 - R= RADIUS
 - PB= PLAT BOOK
 - O.R.B.= OFFICIAL RECORD BOOK
 - PG= PAGE
 - = PERMANENT REFERENCE MONUMENT "LB 4318" (UNLESS OTHERWISE NOTED)
 - = PERMANENT CONTROL POINT "LB 4318"
 - (R)= RADIAL
 - UE= UTILITY EASEMENT
 - DE= DRAINAGE EASEMENT
 - MREE= MAINTENANCE & ROOF EAVE EASEMENT
 - LME= LAKE MAINTINENCE EASEMENT
 - LAE= LIMITED ACCESS EASEMENT
 - WMT= WATER MANAGEMENT TRACT
 - PLS= PROFESSIONAL LAND SURVEYOR
 - PSM= PROFESSIONAL SURVEYOR & MAPPER
 - LB= LICENSED SURVEYING & MAPPING BUSINESS
 - Ch= CHORD DISTANCE
 - CB= CHORD BEARING
 - LWDD= LAKE WORTH DRAINAGE DISTRICT
 - PBC= PALM BEACH COUNTY
 - PDE= PUBLIC DRAINAGE EASEMENT



BUENA VIDA

NICK MILLER, INC.
Surveying & Mapping Consultants

SUITE 105
2560 RCA BLVD.
PALM BEACH GARDENS, FLORIDA 33410
TEL 561 627-5200 FAX 561 627-0983
D.B.P.R. LICENSED BUSINESS No. 4318

SHEET NO. **15**

SCALE: 1" = 50'
DATE: MARCH 2002
JOB NO. 1008.009
FILE: 1008.09